

AC-101
AIR COMPRESSOR
 AL10
 10HP
 Q'ty : 1 SET

TK-101
AIR RECEIVER TANK
 HAT-50
 VOLUME : 0.5m³
 Q'ty : 1 SET

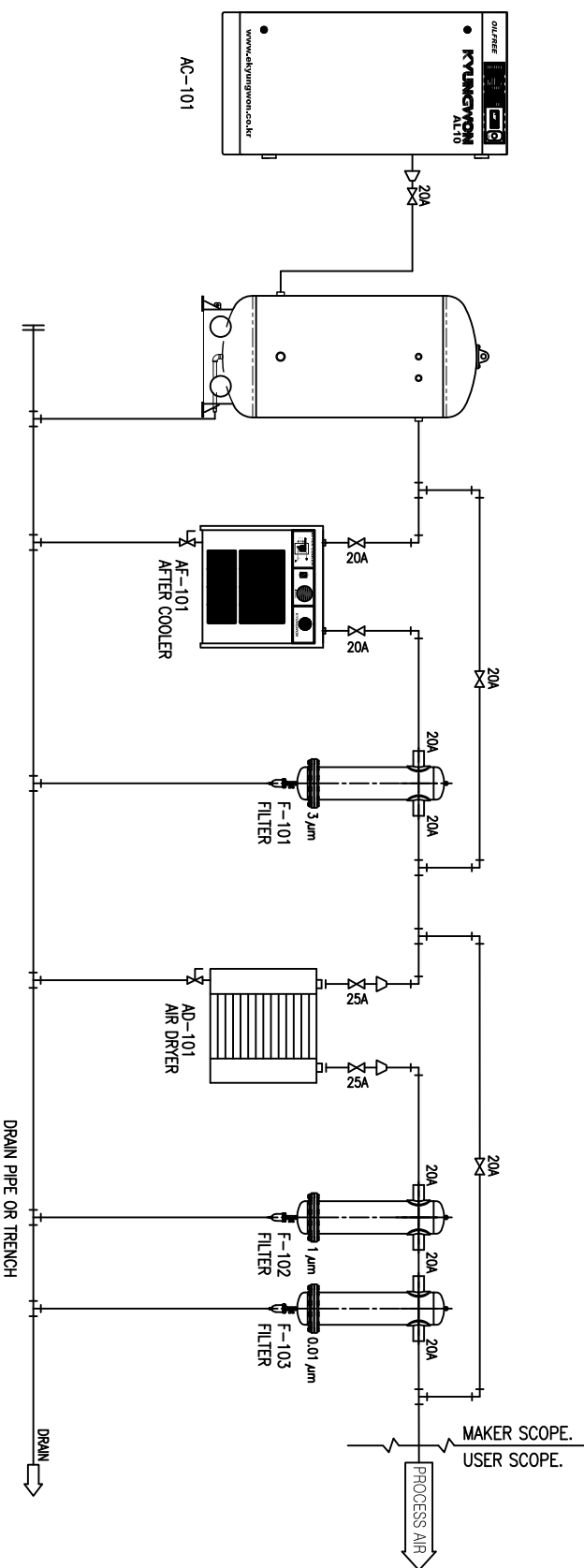
AF-101
AFTER COOLER
 AT-A10G2
 Q'ty : 1 SET

F-101
PRE FILTER
 S150
 FITNESS : 3 um
 Q'ty : 1 SET

AD-101
REFRIGERATE AIR DRYER
 HX76K
 Q'ty : 1 SET

F-102
LINE FILTER
 P150
 FITNESS : 1 um
 Q'ty : 1 SET

F-103
MICRO FILTER
 H150
 FITNESS : 0.01 um
 Q'ty : 1 SET



SYMBOL LIST

- | | | | | |
|--|---|----|--|---|
| | KS 10K BALL VALVE SCREW FITTING | BC | | Y-TYPE STRAINER KS 10K 50MESH SCREW FITTING |
| | KS 10 K SWING CHECK VALVE SCREW FITTING | BC | | DIFFERENTIAL PRESSURE INDICATOR |
| | KS 10K BALL VALVE SCREW FITTING | BC | | ELECTRIC AUTO DRAIN VALVE |
| | FLOAT TYPE TRAP 10K | | | KS 10K BWC28 UNION SCREW FITTING |
| | PRESSURE GAUGE DIA 100 0-15 KG | | | KS 10K BWC28 TEE SCREW FITTING |
| | TEMPERATURE GAUGE DIA 100 0-100 C | | | KS 10K BWC28 ELBOW SCREW FITTING |
| | KS 10K BWC28 REDUCER SCREW FITTING | | | KS 10K SS41P FF FLANGE |

TOLERANCES UNLESS OTHERWISE SPECIFIED		PRODUCT NAME		TITLE	
IT 14		AIR COMPRESSOR SYSTEM		EQUIP.PNID	
MODEL		DESIGNER		THIRD ANGLE PROJECTION	
AL10		T.M. PARK		SCALE N. S	
DWN. BY		CHECKED BY		APPD.	
2012.09.17					
DRAWING NO.		REFERENCE		UNIT : mm	
AC120917		---			
DRAWING NO.		---			
0		---			